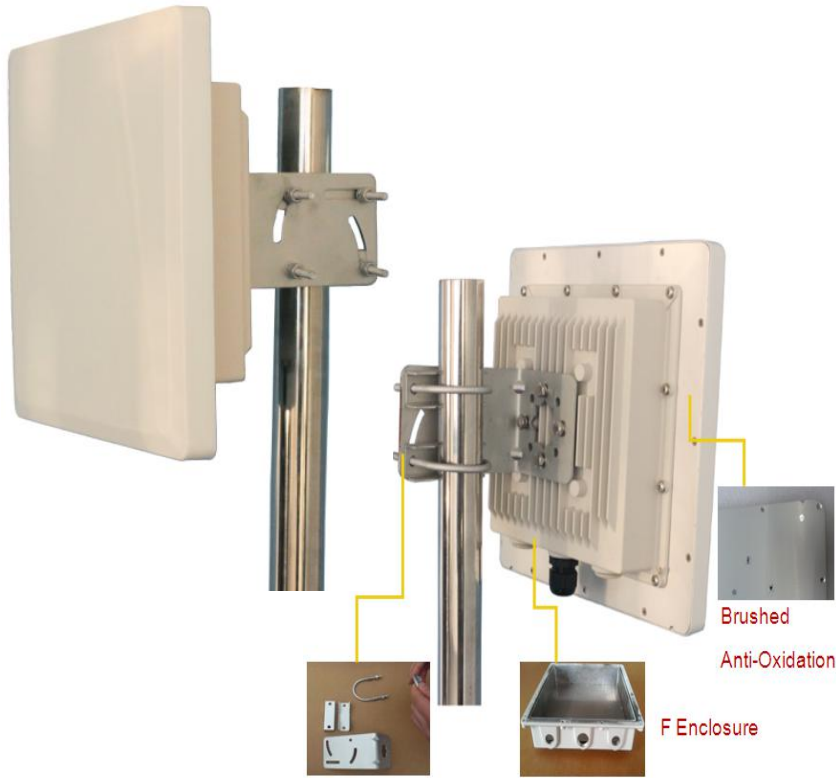


5GHz Enclosure Panel Antenna

DRC-5159-19D17F

DRC-5159-19D17F is a dual polarization enclosure antenna. It's a professional quality antenna designed for service providers in 5GHz broadband. CPE can be put in enclosure.



Application

- 5.1-5.8GHz 802.11a/n WLAN System
- Point to Point Wireless Bridge
- Wide 17° Horizontal Beamwidth
- IP66 Waterproof Level
- UV Protected and Durable ABS Radome
- Stainless L Type Bracket,U-Slot & U-Bolt



Electrical Specifications

Frequency Range	5150-5850 MHz
Gain	19 dBi
VSWR	≤1.5
3dB Beam-Width	17°(H)/18°(E)
Polarization	Vertical & Horizontal
Upper Side Lobes	>13 dB (V Port) , >10 dB (H Port)
Front to Back Ratio	≥30 dB
Port to Port Isolation	>35 dB
Maximum Input Power	100 Watt
Impedance	50 Ω
Lightning Protection	DC Grounded

Mechanical Specifications

Connector	2 × N Female
Inner Space	212.6×212.3×38 mm
Antenna Dimension	270×270×80 mm
Weight	2.5 KG
Radome Material	UV Protected ABS
Enclosure Material	Aluminium Die Cast
Mounting Mast Diameter	Ø40~Ø60 mm
Operating Temperature	-40° C to +65° C
Rated Wind Velocity	216 Km/h

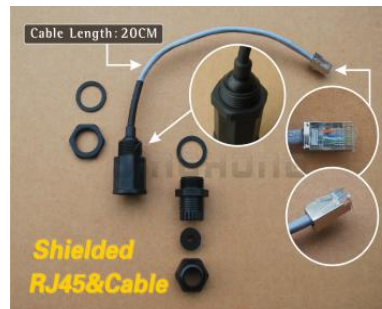
Related Optional Accessories



Cable



Lightning Arrester



RJ45



Package 1pcs/Box
33x31.5x9.5cm 3.0KG